



Equipment 2023 FAQ and explanations

April 22, 2023

Date: April 2023

The Delegates' Assembly 2023 unanimously decided to set a positive sign regarding FEIF's commitment to horse welfare and the fact that horses should be **ridden and presented with as little mechanical and external influence as possible** and thus to switch to a list of permitted bits (valid for breeding, education, leisure riding, sport and youth work).

In addition, to this list, the FEIF Equipment manual describes the function and design of bits in general and provides general information for the wider understanding of the bits.

This document includes several questions that were sent to FEIF plus additional explanations and pictures (only as examples to illustrate the text).

- Only the specifications/limits mentioned on the FEIF website are currently to be considered/measured, no other limits, measurements or sizes apply.
- Only bridles and nosebands listed in the permitted sections are allowed. **The following remain forbidden:**
 - Kineton noseband, Miklem noseband with clip, conventional bitted bridle used together with a bitless bridle, Flash, Mexican, Drop (German/Hanoverian), Miklem or Lever noseband in combination with any bits with a curb chain and/or upper and/or lower cheeks.



Snaffle bits

Snaffle bits

- permitted in breeding and sport
- all age groups and all tests

Accepted

- unbroken, single broken or double broken
- as D-Ring, egg-butt, loose ring snaffle bit with and without port
- full-cheek snaffle bit (only with English noseband)
- **PERMITTED NOSEBANDS:** Flash, Drop, English, Mexican, Micklem, Anatomical, Lever noseband

Not accepted

- fixation options on separate attachment rings for headpiece and/or reins
- in combination with any type of curb chain or strap or clip combination between bit and noseband.
- any leverage effect
- Micklem with clips attached to bit rings

Additional information:

- Barrel mouthpieces **are accepted**
- Unbroken, single and double broken snaffle bits are allowed, **multiple broken bits are not accepted.**
- **Baucher bits are not accepted.** It is not allowed to have fixation options on separate attachment rings for headpiece and/or reins for snaffle bits.
- **Snaffle bits in combination with any type of curb chain** (no matter which material) are **not accepted.**

Example of sleeve/wings for snaffle bits that are allowed as it fulfills the requirement of a loose ring):



Accepted

- unbroken, single broken or double broken
- as D-Ring, egg-butt, loose ring snaffle bit with and without port
- full-cheek snaffle bit (only with English noseband)
- **PERMITTED NOSEBANDS:** Flash, Drop, English, Mexican, Micklem, Anatomical, Lever noseband



Snaffle bits in combination with any type of curb chain or any type of connection between bit and noseband are NOT ACCEPTED



Not accepted

- fixation options on separate attachment rings for headpiece and/or reins
- in combination with any type of curb chain or strap or clip combination between bit and noseband.
- any leverage effect
- Micklem with clips attached to bit rings



Micklem with clips attached to bit rings are NOT ACCEPTED



Not accepted

- fixation options on separate attachment rings for headpiece and/or reins
- in combination with any type of curb chain or strap or clip combination between bit and noseband.
- any leverage effect
- Micklem with clips attached to bit rings



Icelandic Curb Bit

Icelandic Curb Bit

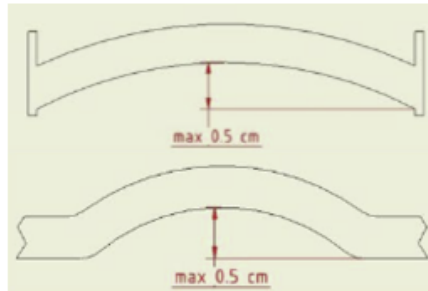
- permitted in breeding and sport
- all age groups and all tests

An Icelandic curb bit has a design with loose connections between the various components, all connecting points are loose and there is no purchase component as the bridle attaches the cheek rings directly.

[More details](#)

Accepted

- single broken, double broken
- a port of max 0,5 cm is allowed, measured from the lowest part of the bit to the lowest part of the port. The port is a bend over the full width of a bit or a bend in the centre of the bit irrelevant of the direction of the port.



- Tightness of the chain approx. 110° between shanks and line of the mouth when reins are in contact.
- Measurements:
 - thickness of the mouthpiece: 1cm minimum at the point of attachment
 - length of loose connection at point of attachment: min.1.5cm – max.2.6cm
 - ring: circular in shape rather than oval
- **PERMITTED NOSEBANDS**: English (plain Cavesson), Anatomical ones in plain cavesson version

Not accepted

- unbroken bits
- fixed mouthpiece
- sliding mouthpiece
- lock-up function
- abnormally long cheek piece

- Currently there is no limitation regarding **shape of centerpiece** as long as it is comfortably on the tongue and fits. Therefore, roller and plate will still be allowed as centerpieces on double jointed Icelandic curb bits.





- The ideal Icelandic bit has a design with loose connections between the various components, all connecting points are loose and there is no purchase component as the bridle is directly attached to the cheek rings.
- One way to demonstrate the looseness of the connection points of the Icelandic curb bit is to hold it as shown in the picture to the left. Doing so the mouthpiece comes in a vertical line.

<https://vimeo.com/816820027/cf552393ee>

Attention: Only the specifications/limits mentioned on the FEIF website are currently to be considered/measured., the picture shows the ideal bit with the ideal looseness, but currently this is not the only accepted version. In 2023 those bits that are not with fixed mouthpieces but limited in their looseness (making them angle when doing the hanging test) are accepted.

- Currently, there are **no measures for shanks**, they are **NOT measured** in 2023. Only specifications on the FEIF website apply.
- Bits with a **very short shanks/lower cheeks** are under the current rules accepted as Icelandic curb bit.
- Icelandic curb bits with **different length of shanks/lower cheeks** are allowed based on the current specifications on the FEIF website.



Example of a bit that is not with fixed mouthpiece (but limited in the looseness at the cheek/mouthpiece connection point - making them angle when doing the hanging test) and therefore **ACCEPTED**.

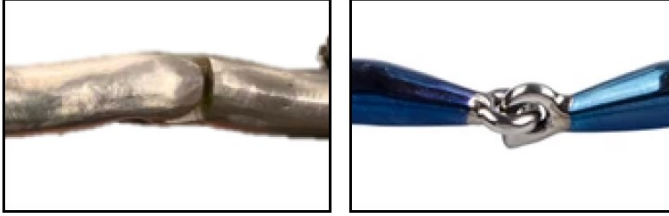
- ➔ The connection is not fixed, the bit can slide both up and down as well as back and forth and there is no additional mechanism restricting the movement of this connection = not a lock-up function. It does not have the looseness of an ideal Icelandic curb bit, but at the moment there is nothing in the rules that prevents it from being allowed.



- ➔ Bits with a very short lower cheek/shank are **ACCEPTED** under the current rules as long as the specifications on the website are fulfilled.



A lock-up function is an additional function that restricts the movement of the joint so it can only bend in one direction. Mouthpieces that become a bar due to any locking mechanism are **NOT ACCEPTED**, no matter which direction the bit locks. Below are examples of forbidden lock-up bits, showing a mouthpiece with a hinge joint as well as a mouthpiece with a ring joint where a stop had been added.



Not accepted

- unbroken bits
- fixed mouthpiece
- sliding mouthpiece
- **lock-up function**
- abnormally long cheek piece



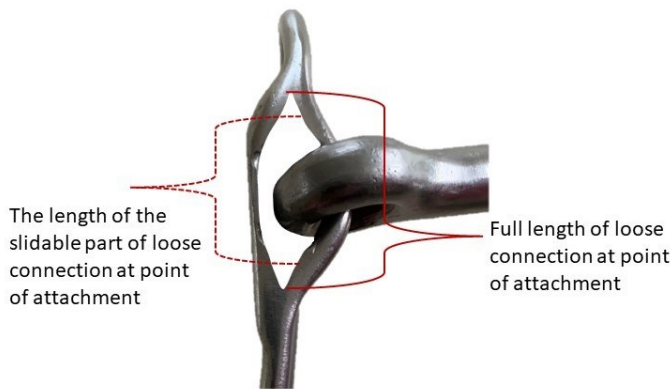
A mouthpiece is considered fixed when up and down movement is not possible. Fixed mouthpieces are **NOT ACCEPTED**.

Not accepted

- unbroken bits
- **fixed mouthpiece**
- sliding mouthpiece
- lock-up function
- abnormally long cheek piece



The picture shows how to measure the length of the loose connection at the point of attachment. For measuring it a caliper gauge must be used. The minimum length of loose connection at point of attachment is 1.5cm, the maximum is 2.6cm



In case the **curved sliding bar and the check connects in a very small slit**, only the length of the slidable part of loose connection at point of attachment is measured (min. 1.5cm and max. 2.6cm).

The non-slidable parts, above and beneath the mouthpiece in the highest and lowest sliding position, must be deducted from the full length of loose connection at point of attachment.

It is not relevant to **measure the ring**, however the ring shall be circular in shape rather than oval.

- Measurements:
 - thickness of the mouthpiece: 1cm minimum at the point of attachment
 - length of loose connection at point of attachment: min. 1.5cm – max. 2.6cm
 - ring: circular in shape rather than oval



Pelham (only allowed in sport)

Pelham

- permitted in sport (not in breeding)
- all age groups and all tests

Accepted

- unbroken, single broken, double broken
- fixed mouth piece
- a port of max.0,5 cm is allowed, measured from the lowest part of the bit to the lowest part of the port. The port is a bend over the full width of a bit or a bend in the centre of the bit irrelevant of the direction of the port
- has to be ridden with two reins
- tightness of the chain approx. 45° between shanks and line of the mouth when reins are in contact.
- **PERMITTED NOSEBANDS:** English (plain Cavesson), Anatomical ones in plain cavesson version

Not accepted

- in breeding
- with sliding mouthpiece
- with one rein only

- Pelham has to be ridden with two reins.
- For Pelham the ideal ratio between upper and lower cheek is approx. 1:1,5 to 1:2 – According to the current specification there is no measuring required.
- **Kimblewick/Kimblehook is NOT ALLOWED**, but alternatively, the Pelham can be used. The function is comparable but more precise regarding the function of the bit.

Bitless bridle

Bitless bridles

- permitted in breeding and sport
- in all age groups and all tests

Accepted

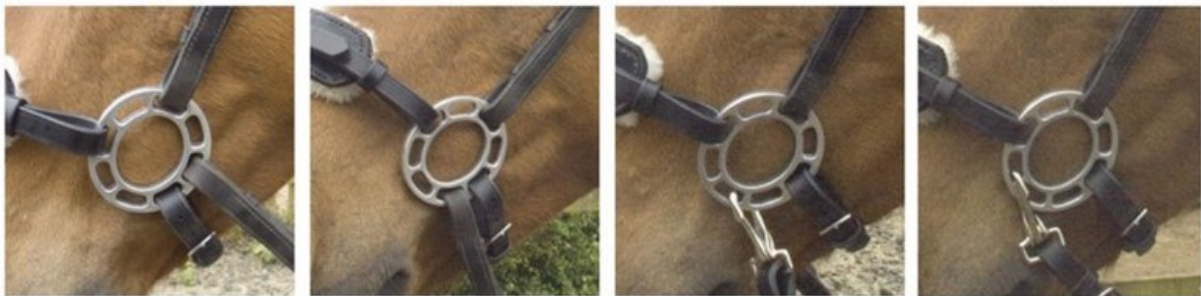
- bitless bridle with fixed attachment points for headpiece, chain strap and reins
- material from noseband on plain leather noseband (soft material) without metal or similar inlays

Not accepted

- in combination with upper and/or lower cheeks
- in combination with upper and/or lower cheeks and chain/straps of any material

- **Hackamore is NOT ALLOWED** because bitless bridles in combination with upper and/or lower shanks are not permitted.

All those configurations are ACCEPTED.



Combinations of bit and bitless bridles are NOT ACCEPTED.



Other information



Additional equipment that is not mentioned in G8.4 is **NOT ALLOWED.**

